

Features

- Real-time power matching, high efficiency and high fuel economy;
- Powerful turbocharger;
- Reinforced machine structure, durable and reliable;
- Comfortable operator's cab provides easier access to operation.

Specifications

Item	SY235C-8
Overall Weight	23100kg
Std. Bucket Volume	1.2m³
Quota Power	125kW/2100rpm
Travel Speed (Highest/Lowest)	5.5/3.6km/h
Swing Speed	12rpm
Gradeability	70%/35°
Ground Pressure	47.6kPa
Bucket Digging Force	175kN
Arm Digging Force	122kN



SANY Overseas
Address: 319 Chuanda Road, Chuansha Economic Park, Pudong, Shanghai, China
Postcode: 201200
Website: <http://www.sanygroup.com>
Consultation Hotline: (+86)21-58592902
Email: sanyservice@sany.com.cn

Materials and specifications are subject to change without further notice in accordance with constant technical innovations.
Photos may include additional equipment.

Copyright ©2010 SANY Group Co.,Ltd. All rights reserved.

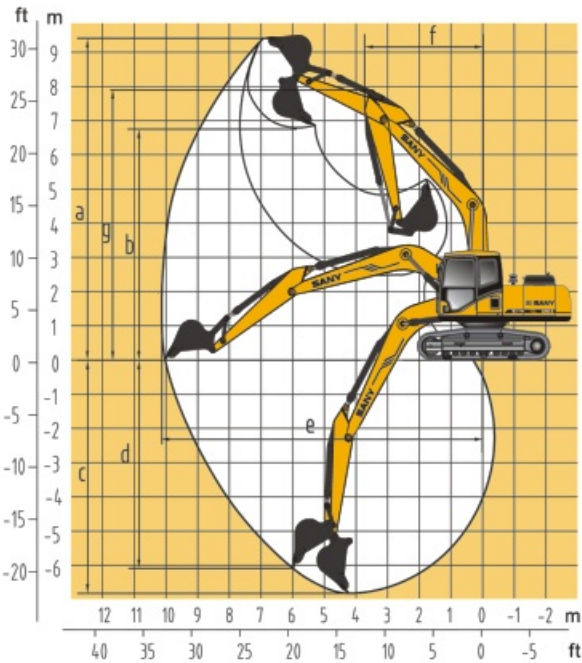
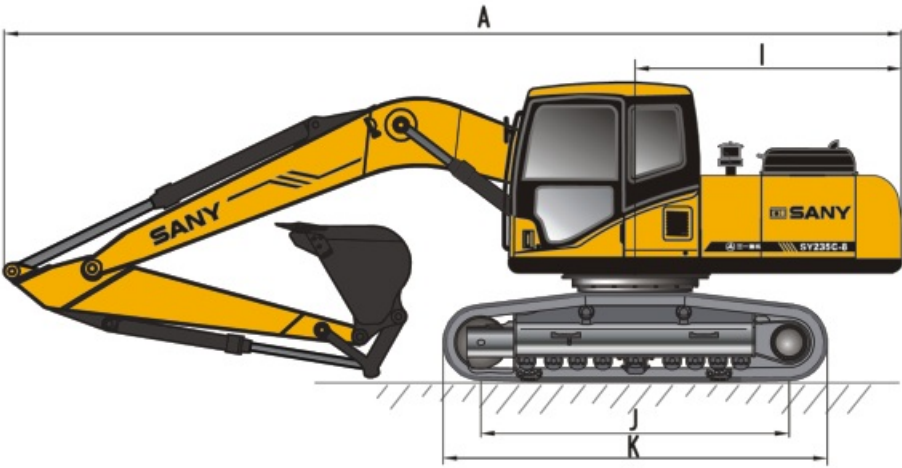
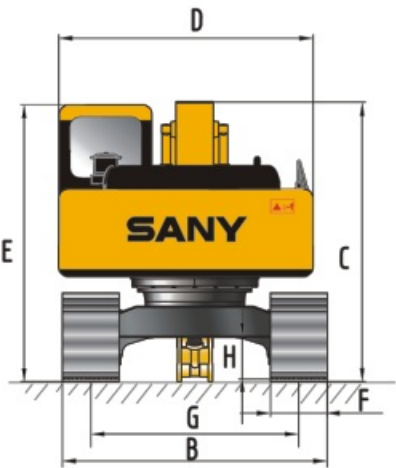
SY235C-8 Excavator



Printed in China



Dimension



Item (Unit: mm)	SY235C-8
A Length (During Transportation)	9910
B Width	2980
C Height (During Transportation)	3180
D Upper Body Width	2710
E Cab Height	2930
F Std. Track Width	600
G Track Gauge	2380
H Min. Ground Clearance	440
I Tail Swing Radius	2860
J Roller Gauge	3640
K Track Length	4445

Item (Unit: mm)	SY235C-8
a Max. Digging Height	9630
b Max. Dumping Height	6725
c Max. Digging Depth	6785
d Max. Vertical Digging Depth	5845
e Max. Excavating Distance	10150
f Min. Swing Radius	3800
g Height At Min. Swing Radius	7940

Configuration

Standard

Powertrain

Mode control (H, S, L and B)
Start motor 24V 4.5KW
Alternator 50A
Air pre-filter
Dry inner and outer air cleaner elements
Oil filter
Fuel filter
Engine oil cooler
Radiator with protective screen
Radiator auxiliary coolant tank
Fan guard
Isolated engine
Auto deceleration system
Acceleration system

Operator Station

Steel-structured cab with noise insulation
Tempered light-tinted windows
Silicone rubber dampers (6)
Opening roof hatch, front upper window and left window
Rear window (alternate exit)
Wiper with washer (low noise)
Adjustable operator seat with adjustable armrest
AM-FM radio with digital clock
Foot rest and floor mat
Speaker and rear view mirror
Seat belt and fire extinguisher
Cup holder and interior lamp
Ashtray and hammer
Storage box and literature bag
Pilot control cutoff lever
Automatic air conditioner
Cab visor

Undercarriage

Parking brake
Travel motor guard
HH-shaped track guide
Hydraulic track tensioner
Bolted sprocket
Carrier roller and track roller
Reinforced link with pin seal
Tri-grouser track shoe (600mm)
Bottom coverplate

Hydraulic System

Working mode selector
Power enhancer
Control valve with main relief
Standby port of control valve
Oil suction filter
Oil return filter
Pilot filter

Swing Platform

Fuel level float
Hydraulic oil level gauge
Toolbox
Rear view mirror (right)
Swing brake

Work Equipment

Flange pin
Bucket clearance adjusting mechanism
All bucket pins equipped with dust ring
Box type welded boom (5.9m)
Box type welded arm (2.95m)
Guard
Standard bucket (1.2m³)

Meters and Gauges of Monitoring System

Hour meter and fuel tank level gauge
Engine coolant temperature gauge
Engine oil pressure gauge

Alert

Engine oil pressure insufficient or engine coolant overheated
Failure of fuel control dial
Fuel level low

Others

Standard battery box
Lockable engine hood
Lockable fuel filler cap
Non-skid pads and handrail
Travel direction marks on track frame
Hand grease gun

Optional

Bucket Name	Capacity m³	Outer Width mm	Weight Kg	Standard Arm 2.95 m
Earthwork	1.2	1300	945	○
*Rockwork	1.1	1290	898	◇

○ Used for excavating or loading materials with a specific gravity not greater than 1.5t/m³
◇ Used for excavating or loading materials with a specific gravity not greater than 1.8t/m³